



2017 Fairline Squadron 65 4 Cabin Layout £1,199,950 VAT EU TAX paid

FOR SALE: An extremely well maintained 2017 Fairline Squadron 65 fitted with twin Caterpillar C18 - 1150hp engines currently running with approx 970 hours. She is an extremely high spec'd boat with features including: Seakeeper 9 Gyroscopic stabiliser // Hydraulic Pasesarelle (with remote) // Hydraulic Hi-Low bathing platform (400kg capacity) // Stern docking winches // Underwater lights // Hard-top roof with integrated electric sliding canvas roof // Hand held yacht controller with thruster and engine control // Trim tabs // Flybridge bar with integrated: fridge, ice-maker, griddle and sink // Reverse cycle air conditioning // Audio speakers to cockpit and flybridge // Transom shower // Glendinning Cablemaster // Garmin navigational equipment to both helms: Multi-functional display (speed, depth, log), Plotter with GPS and Radar, and autopilot // Hydraulic bow & stern thrusters // Inverter // Smart Tv's throughout // CCTV to cockpit and engine room // Exterior mood lighting // Interior mood lighting // Fusion audio system to master // Harman Kardon surround sound cinema system to saloon // Washer/dryer // Galley fitted with: 4 burner electric hob, dishwasher and microwave/oven. The list goes on...(more pictures coming soon). If this Squadron 65 is of interest to you please get in contact with Boats.co.uk via Email: sales@boats.co.uk or Call +44 (0)1702 258885.

Specification

Stock number:	EB5421
Manufacturer:	Fairline
Model:	Squadron 65 4 Cabin Layout
Year:	2017
Price:	£1,199,950 VAT EU TAX paid
Location:	Cala d'or, Mallorca, Spain

Dimensions

LOA:	20.4 m - 66ft 11in
Beam:	5.2 m - 17ft 1in
Draft:	3.01 m - 9ft 11in
Displacement:	32 kgs
Freshwater Capacity:	1 litres

Engine(s)

Engine Mfr:	Caterpillar C18 - 1150 Engines
Fuel:	Diesel
No of Engines:	2
Engine Hours:	970
Engine Power (HP):	1150
Drive Type:	Shaftdrive
Fuel Tankage:	3.0

Accommodations

Guest cabins:	4
Guest berths:	8
Crew cabins:	1
Crew berths:	2

Highlights

- Amazing Condition
- Gyro Stabiliser
- Hard Top Roof
- 1 Owner From New

Galley

Microwave - Microwave/oven

Hob - 4 burner electric hob to galley

Dishwasher

Washer dryer

Navigation Equipment

Autopilot - Garmin autopilot to both helms

Plotter - Garmin plotters with gps and radar to both helms

Multifunction Display - Garmin speed/depth/log display to both helms

Electrical Equipment

Stern thruster - Hydraulic stern thruster

Bow thruster - Hydraulic bow thruster

Inverter - Audio/visual equipment only

Television - Smart Tv's throughout

Camera system - To cockpit and engine room

WIFI

Exterior mood lighting

Harman Kardon audio system - Surround sound cinema system to saloon

Fusion audio - AV750 to master cabin

General Equipment

Hydraulic passarelle - With remote

Stern docking winches

Underwater lighting

Teak laid cockpit

Teak laid flybridge

Teak laid side decks

Gyro stabilizer - Seakeeper 9 Gyroscopic Stabiliser

Hard Top - Integrated with electric siding canvas roof

Yacht Controller - For engines and thrusters

Teak Cockpit Table

Trim Tabs

Safe - Digital safe to master cabin

Flybridge bar with integrated fridge, griddle and icemaker

Hydraulic high/low bathing platform - 400kg capacity

Teak flybridge table - With integrated cool box

Reverse cycle air conditioning

Interior mood lighting

Audio speakers - To cockpit and flybridge

Teak laid bathing platform

Transom shower - Hot & Cold

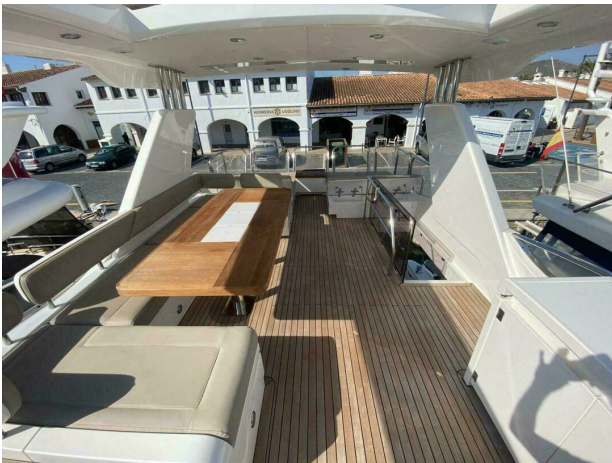
Glendinning Cablemaster - Shore power system

Water Purifier

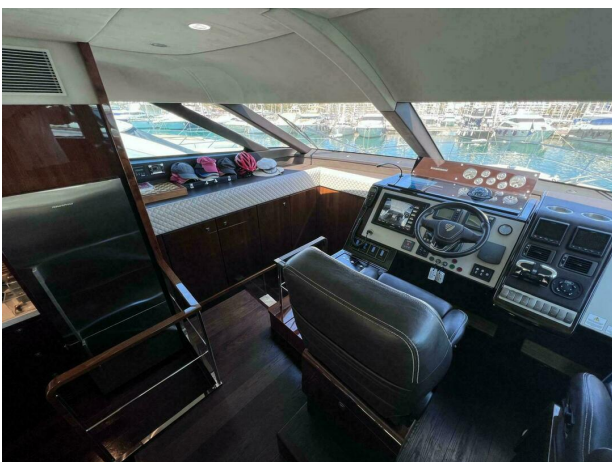
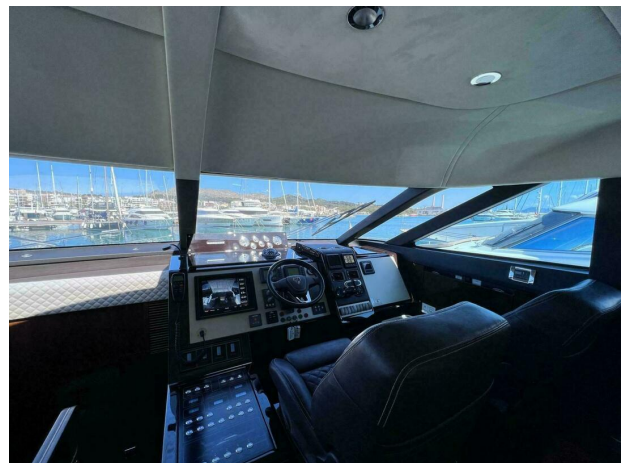
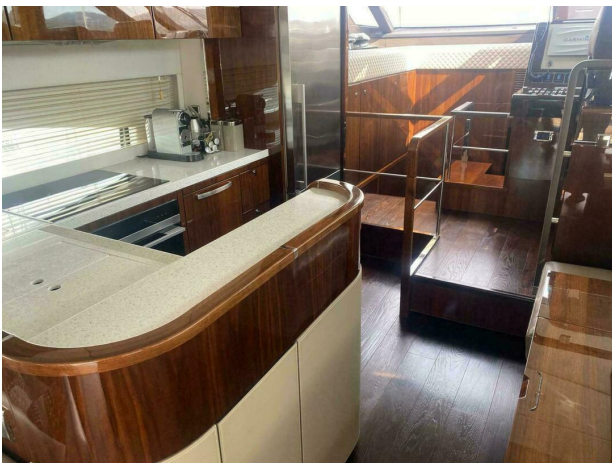
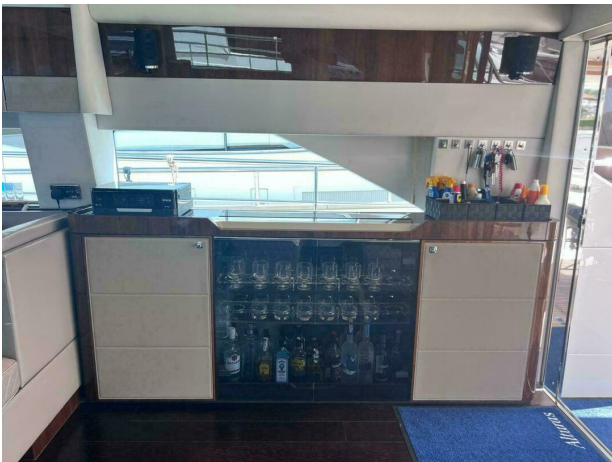
Disclaimer

All the information on this advert is correct to the best of our knowledge, but cannot be guaranteed until the point of sale.

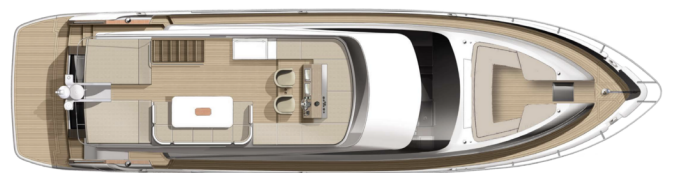
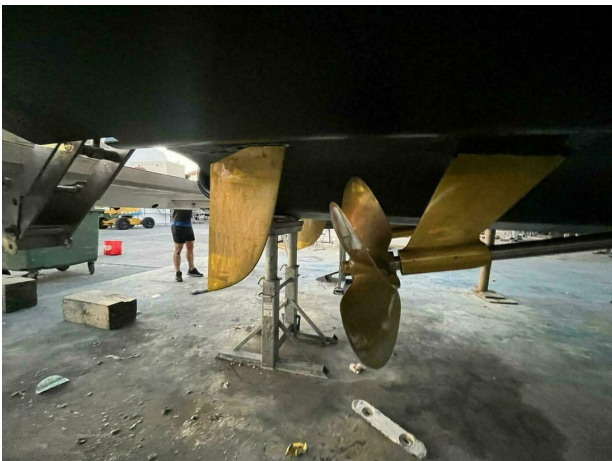
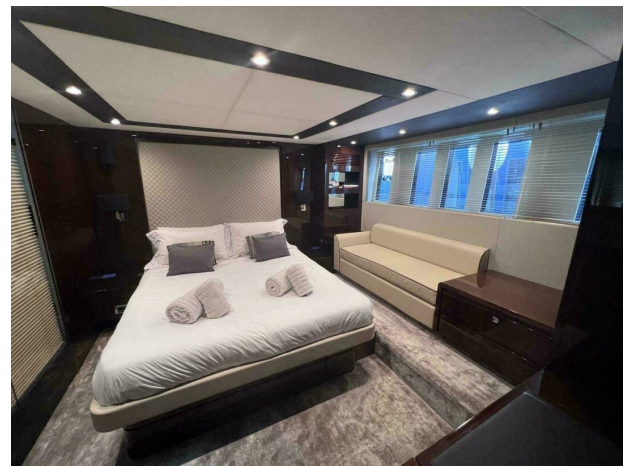
2017 Fairline Squadron 65 4 Cabin Layout Gyro Stabilisation



2017 Fairline Squadron 65 4 Cabin Layout Gyro Stabilisation



2017s Fairline Squadron 65 4 Cabin Layout Gyro Stabilisation



2017 Fairline Squadron 65 4 Cabin Layout Gyro Stabilisation

