



1992
Camarc Ltd Design / Croft Marine
£14,950 VAT UK TAX paid

Camarc Ltd Design/Croft Marine Built Pilot Boat. This particular vessel is from a one-off Pilot House design suited to diving/survey work. the Cummins NT855 with a MG507 Twin Disc gear box is included however it is seized. This engine has been removed from the boat but it will be supplied with the vessel in parts.

We do have a used 2020 Caterpillar C7.1 (350HP) diesel engine with approx 20 hours use that could be used if required. We will sell the boat as is or with the option of the Cat engine. Speak to us about your requirements.

The steel hull construction and typical pilot vessel features such as the fendering, functional MoB transom door, lifting davit, hydraulic bow thruster made it ideally suited to many commercial roles. The vessel also has very good pushing capability due to its design. It was an MCA Coded to Cat. 3 vessel.

Specifications

Vessel name: Syd Hook
Condition: Good
Vessel type: Pilot Boat
Designer: Camarc Ltd
Builder: Croft Marine
Constructed: 1992
No. of engines: 1
Engine model: Cummins NT855 (Engine Seized)
Engine power: 280
Fuel type: Diesel
Drive type: Shaft drive
Cruising Speed: 6 Knots
Maximum Speed: 8 Knots
Nominal length: 11.74m
Length over all: 11.99m
Length at waterline: 11.00m

Specification

Stock number: **ESM093**
Manufacturer: **Camarc Ltd Design / Croft Marine**
Model: **40FT Pilot Boat**
Year: **1992**
Price: **£14,950 VAT UK TAX paid**
Location: **Essex Marina, United Kingdom**

Dimensions
0 kgs
LOA: **11.99 m - 39ft 4in**
Beam: **4.0 m - 13ft 1in**
Draft: **1.26 m - 4ft 2in**

Engine(s)

Highlights

- **PROJECT BOAT**
- **PROJECT BOAT**
- **PROJECT BOAT**
- **PROJECT BOAT**

Image 1992 Camarc Ltd Design / Croft Marine Built 40FT Pilot Boat

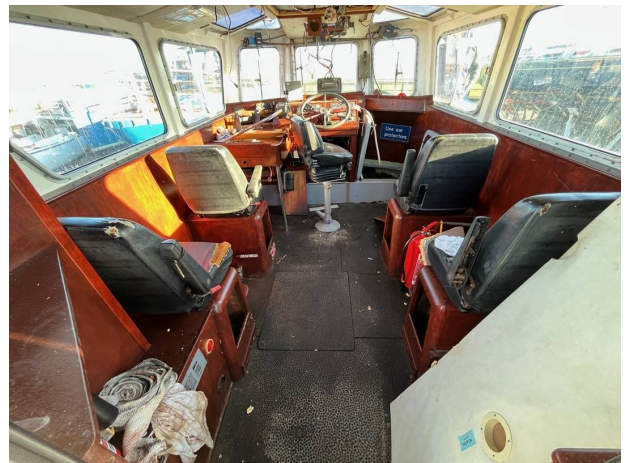
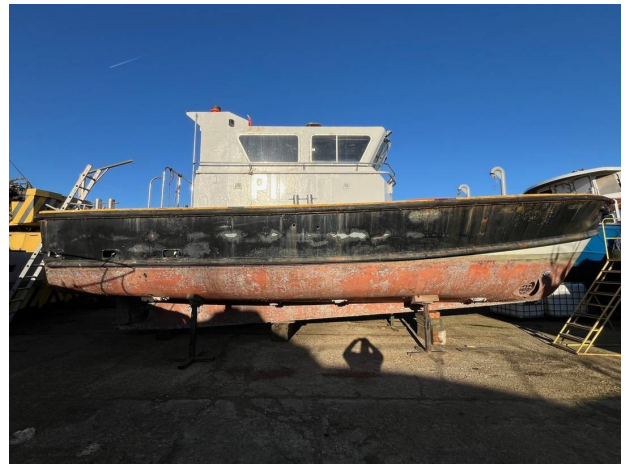
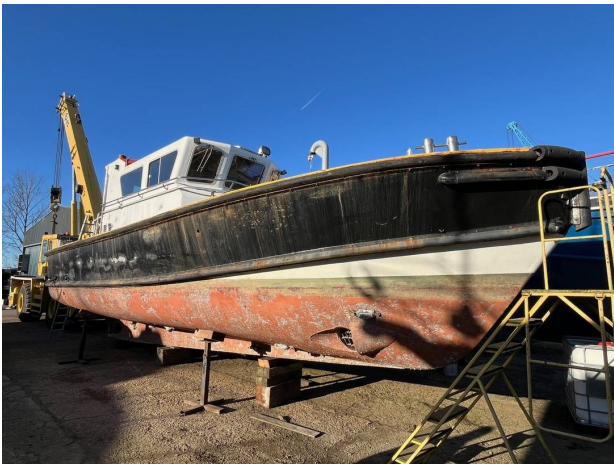


Image 1992 Camarc Ltd Design / Croft Marine Built 40FT Pilot Boat

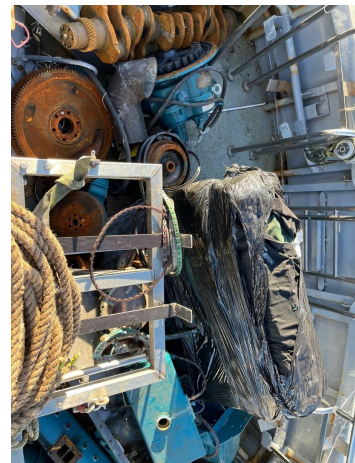
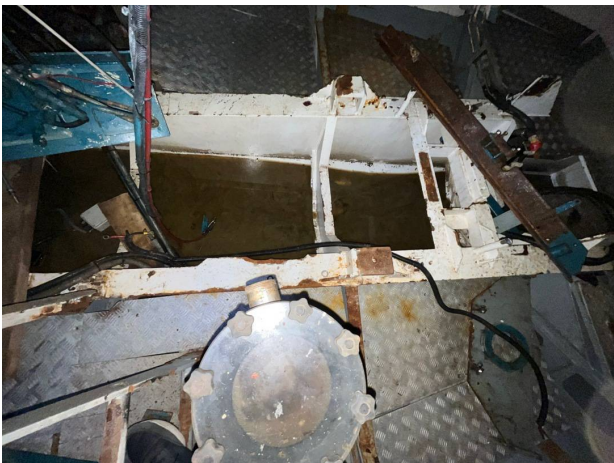
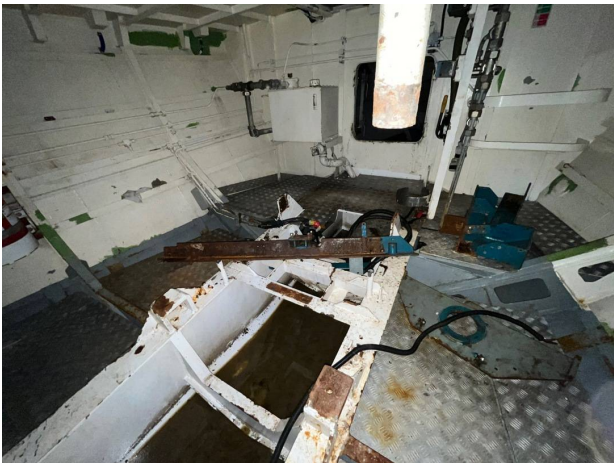
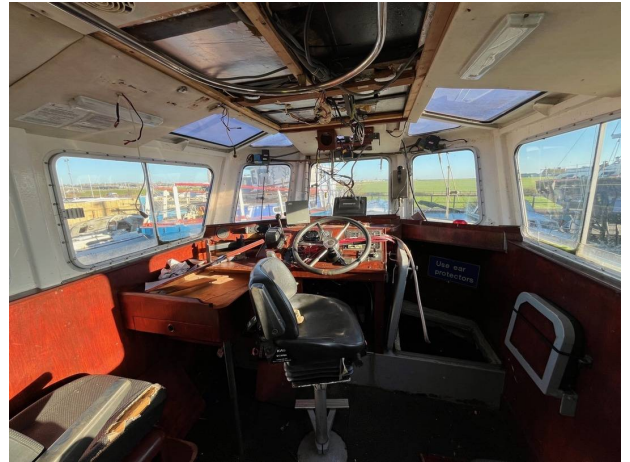
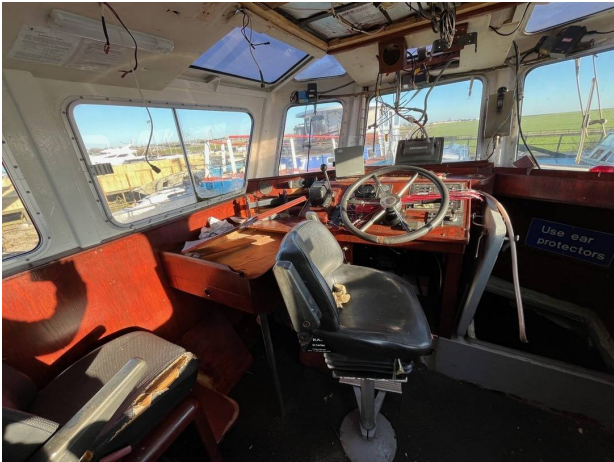


Image 1992 Camarc Ltd Design / Croft Marine Built 40FT Pilot Boat

