



2017 Fairline Squadron 53 £899,950 VAT EU TAX paid

2017 FAIRLINE SQUADRON 53 WITH TWIN VOLVO PENTA D11 DIESEL ENGINES & SHAFT DRIVES // 552 HOURS // Seakeeper Gyro Stabilizer // Cummins Onan generator // 3 Cabin layout - 6 berths // Crew cabin - 1 berth // Spacious saloon & galley // Med specification // Bow seating and table // Cockpit seating with teak table // Flybridge seating with teak table // Double length Bimini top on flybridge // Full flybridge wet bar with griddle, icemaker, fridge & sink // Fully equipped galley with microwave grill & oven, 4 ring induction hob, fridge/freezer, drawer dishwasher, twin sinks // High-low swim platform // Hydraulic passerelle // Teak decking to cockpit, flybridge, side decks & bow // This is beautiful mediterranean ready boat is wonderful condition throughout with lots of space to relax in and enjoy your time onboard.

THIS IS A STOCK BOAT SUPPLIED WITH WARRANTY - AVAILABLE IN OCTOBER 2024 - PART EXCHANGE WELCOME & ENCOURAGED
Contact Boats.co.uk for more information +44 (0)1702 258885 email: sales@boats.co.uk

Specification

Stock number:	ES4134
Manufacturer:	Fairline
Model:	Squadron 53
Year:	2017
Price:	£899,950 VAT EU TAX paid
Location:	Boats.co.uk, Cala d'Or, Mallorca, United Kingdom

Dimensions

LOA:	16.92 m - 55ft 6in
Beam:	4.52 m - 14ft 10in
Draft:	1.2 m - 3ft 11in
Displacement:	21000 kgs
Freshwater Capacity:	550 litres

Engine(s)

Engine Mfr:	Volvo Penta D11-725HP
Fuel:	Diesel
No of Engines:	2
Engine Hours:	554
Engine Power (HP):	1450
Drive Type:	Shaftdrive
Fuel Tankage:	2412.0

Accommodations

Guest cabins:	3
Guest berths:	6
Crew cabins:	1
Crew berths:	1

Highlights

- MED SPECIFICATION
- TWIN VOLVO D11 DIESELS
- SEAKEEPER GYRO STABILIZER
- 3 CABIN LAYOUT + CREW CABIN

Accommodation

Accommodation - Mid ship master with double berth, en-suite, vanity unit with mirror, drawers and sofa

Forward guest cabin with twin single berth, conversion to double, access to day head/en-suite

Port guest cabin with twin single berths, access to day head

Crew cabin with single berth, access to day head toilet & sink

Fitted out crew cabin

Skylight to saloon - With blind

Galley

Microwave - With grill and convection oven

Hob - 4 ring induction

Dishwasher

Sink & drainer - Twin sink with mixer

Fridge/Freezer - Full height

Navigation Equipment

Compass - To both helm (main and flybridge)

Depth instrument - Garmin to both helms

Autopilot - Garmin to both helms

Full set of IMCO navigation lights

Garmin GPSMap 12" Chart plotter touchscreen to helm - x 2 - main helm and flybridge helm

Electrical Equipment

Stern thruster - Controls to both helms

Bow thruster - Controls to both helms

Battery charger

Generator - Cummins Onan - 2027 hours

Air conditioning - Tropical air conditioning throughout

Television - 40" Samsung powerlift TV to saloon
32" TV to master and forward cabin
22" TV to port cabin with mounted PlayStation 4

Shorepower

Hot & cold water system

Camera system - To bathing platform

Anchor upgrade package

Mood lighting to exterior

Electric toilet

Harman Kardon audio system - To saloon

Wine cooler - To saloon sideboard

Fusion audio - Fusion music system throughout

General Equipment

Bimini - X 2 - for front and rear of flybridge

Covers

Hydraulic passarelle

Stern docking winches

Underwater lighting

Teak laid cockpit

Teak laid flybridge

Teak laid side decks

Gyro stabilizer - Seakeeper 6

Third station controls

Teak Cockpit Table

Trim Tabs

Flybridge bar with integrated fridge, griddle and icemaker

Hydraulic high/low bathing platform

Teak flybridge table

Bow cushions

Interior mood lighting

Black water holding tank - with sea and deck discharge

Bathing ladder

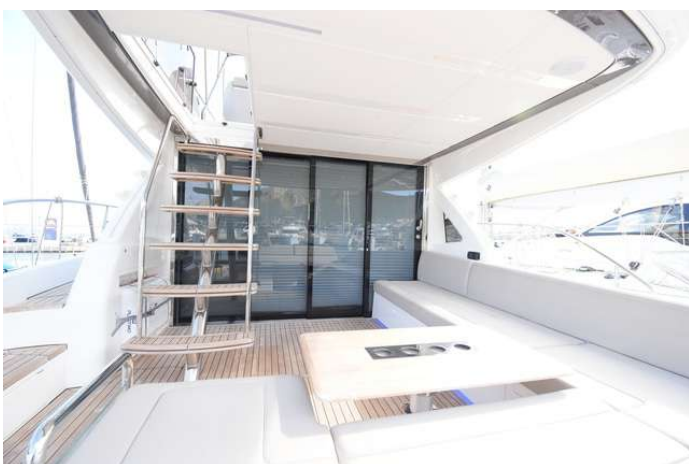
Aft cockpit cover

Transom shower - Hot & cold

Teak Foredeck Table

Disclaimer

All the information on this advert is correct to the best of our knowledge, but cannot be guaranteed until the point of sale.









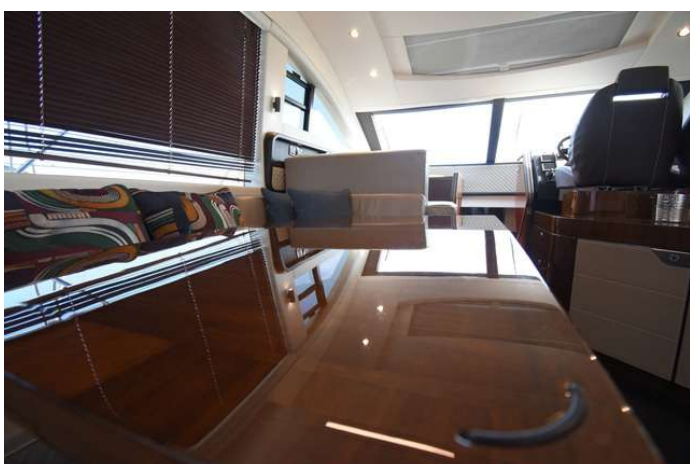




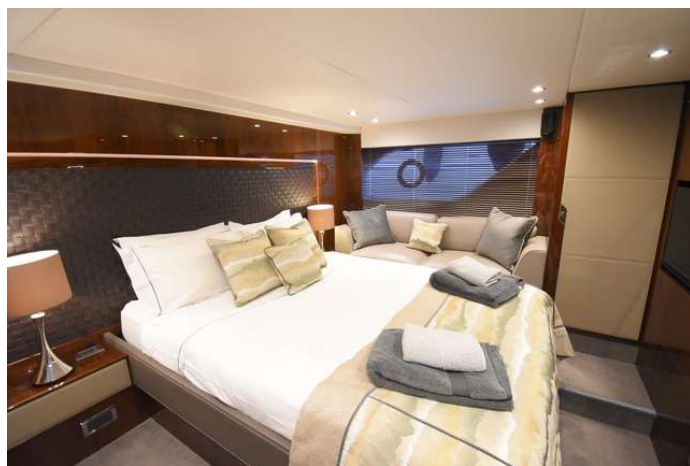
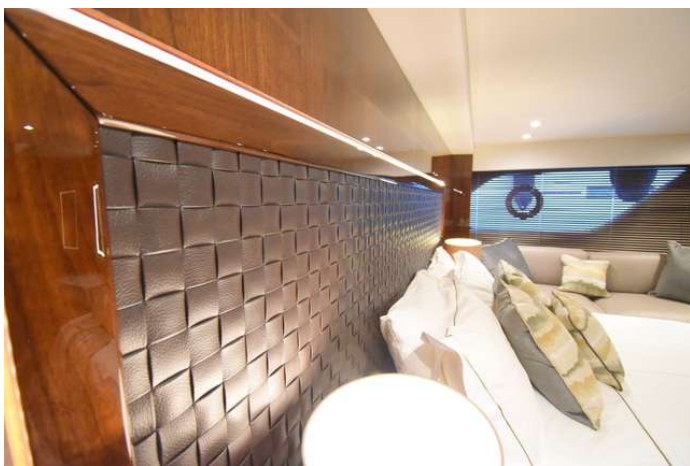
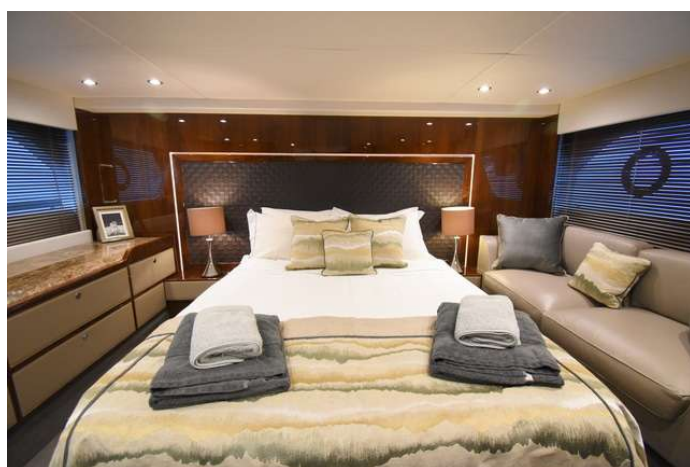




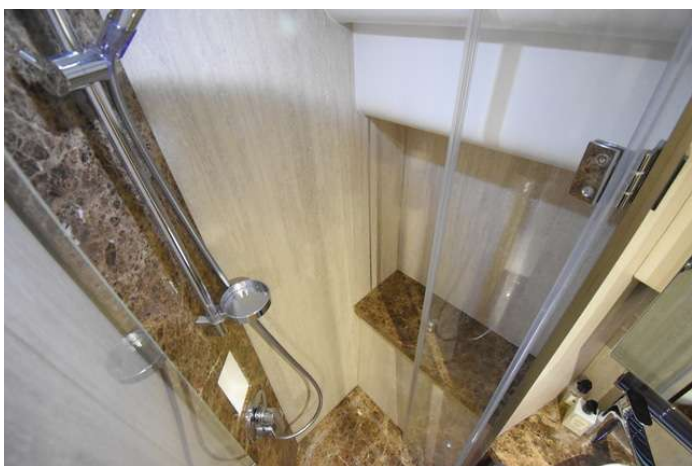




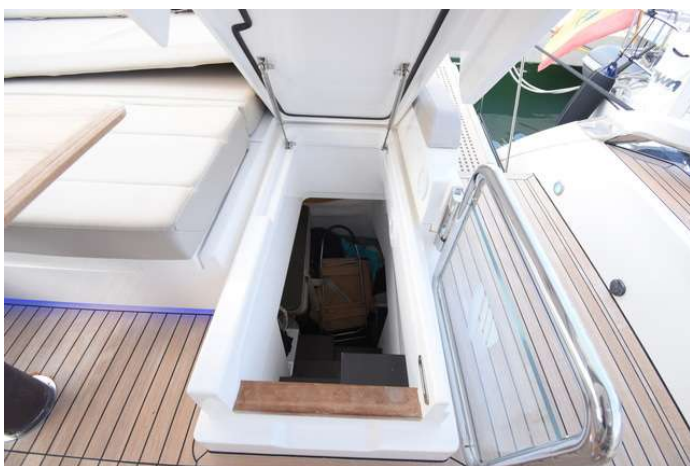
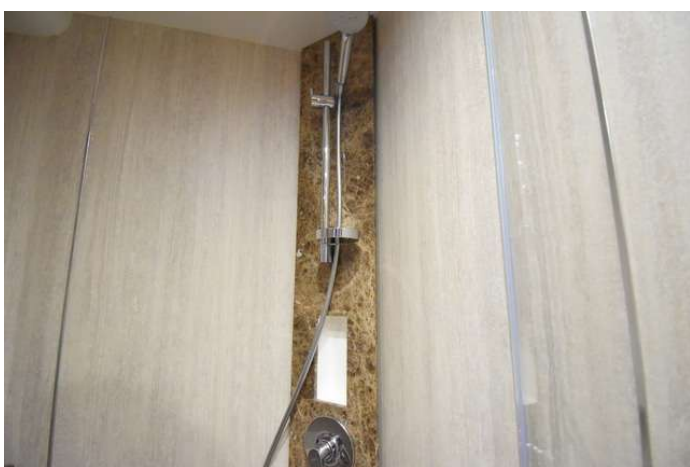












Images

2017 Fairline Squadron 53

